

STUDYING TOGETHER: SABBATH

Bible study groups begin at 10:00am and meet in a variety of locations

(see map below). You're invited to attend any of the groups studying a wide variety of topics.

Children's classes meet in the east wing of our facility (except for the teens who meet in the Youth Chapel) and provide a great opportunity for your child to learn more about Jesus in a warm and safe environment.

An offering is taken during our study time and supports various mission projects as well as providing study materials for all age groups on Sabbath mornings.

STUDY GROUP LOCATIONS

Whether you're a member or a guest, you're invited to attend any of the study groups:

• **A Conversation About the Scriptures:** Come join us for a lively discussion as we study the Gospel of John. The Gospel of John was written to prove that Jesus Christ is the Son of God. As an eyewitness to the love and power displayed in the life and teachings of Jesus, John gives us an up-close and personal look at Christ's identity. He shows us that Jesus, though fully God, came in the flesh to distinctly and accurately reveal God, and that Christ is the source of eternal life to all who believe in him. *(Team led by Jim Brewster/Jeff Pierson/Brian Toppel in Fellowship Hall-room #1)*

• **Adult Quarterly: The Book of Proverbs:** The Book of Proverbs teaches about what it means to follow God in our daily lives. Proverbs provides down-to-earth advice for daily living. *(A: Left rear of Sanctuary—Teacher: Norman Herron B: Front right of Sanctuary— Teachers: Mike Wood)*

WORSHIP SERVICE

January 3, 2015

11:15am - 12:30pm

We Gather For Worship

Children's Story

Worship in Giving

Tulio Robinson

Church Family Budget

Worship in Prayer

Jim Brewster

Today's Message

Dan Appel

"A Balanced Life for Unbalanced People:

Making the Important Things the Important Things"

TO GET THE MOST OUT OF WORSHIP TODAY WE RECOMMEND:

~ **Fill out the Welcome Card located in front of you as you sit down.** It will help us become better acquainted and allow you to communicate with us your needs and/or request information. Just check the appropriate boxes and be sure to write your name and contact info so that we can follow up and simply place the card in the offering plate.

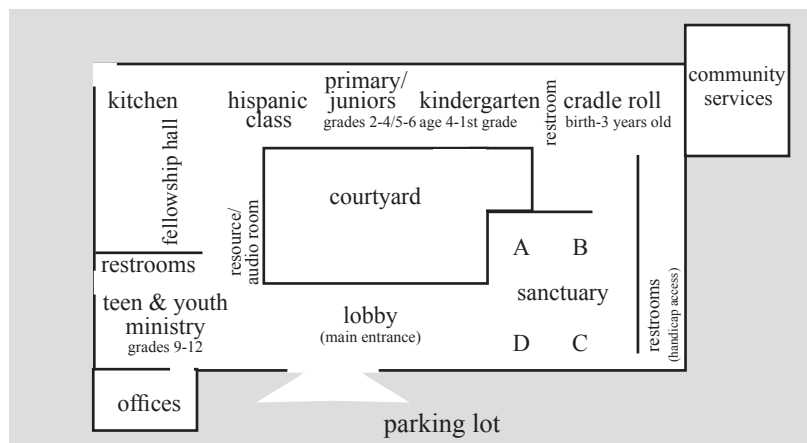
~ **Be respectful of others** by turning off or silencing your cell phone.

~ **Please don't feel obligated to participate in the offering.** The offering is intended for members and regular attenders who consider Auburn their church home. As our guest, we ask only that you place your Welcome Card in the offering plate when it is handed to you.

~ **Nursing mothers** may care for their child in the Mother's Room located off to the left of the Sanctuary.

~ **Hearing assistance** is available. Please ask at the sound booth for an amplifier.

map



Financial Report
2014-15 fiscal year:
as of December 27, 2014 week 26

Church Family Budget

Received: \$95,788.30
Needed: \$89,000.00

Building Fund

Goal \$50,000.00

Received: \$36,823.83
Needed to reach goal: \$13,176.17

Student Assistance Fund

Received: \$11,831.00
Needed: \$12,500.00

Next week's offering is for Conference Advance

CHURCH STAFF

Dan Appel, Senior Pastor (530)392-3428
David Carreon, Associate Pastor (530)852-4770
Jim Brewster, Admin Pastor (530)887-1655
Tulio Robinson, Head Elder (530)885-4232
Kathy Brewster, Church Clerk (530)887-1655
Vic Anderson, Principal (PHAA) (530)885-9447
Kendall Porco, Community Services (530)823-0345
Norman Herron, Head Deacon (530)820-3573
Rodney Wehtje, Finance Chair (530)885-4232
Jenell Wareham, Treasurer (530)885-4232

Community Services, Tuesday 9-1 (530)823-0345
Auburn Renewal Center, Tues (530)887-8673



BECAUSE WE BELIEVE JESUS IS RETURNING, OUR MISSION IS:
TO ATTRACT AND GROW PASSIONATE FOLLOWERS OF JESUS THROUGH
WORSHIP, RELATIONSHIPS, AND SERVICE.

THE CARING CHURCH

IF THIS IS NOT A PLACE
WHERE TEARS ARE UNDERSTOOD,
WHERE DO I GO TO CRY?

IF THIS IS NOT A PLACE
WHERE MY SPIRIT CAN TAKE WING,
WHERE DO I GO TO FLY?

IF THIS IS NOT A PLACE
WHERE MY QUESTIONS CAN BE ASKED,
WHERE DO I GO TO SEEK?

IF THIS IS NOT A PLACE
WHERE MY FEELINGS CAN BE HEARD,
WHERE DO I GO TO SPEAK?

IF THIS IS NOT A PLACE
WHERE YOU'LL ACCEPT ME AS I AM,
WHERE DO I GO TO BE?

IF THIS IS NOT A PLACE
WHERE I CAN TRY AND LEARN AND GROW,
WHERE CAN I JUST BE ME?

OUR DREAM IS THAT THE AUBURN ADVENTIST CHURCH CAN BE A PLACE
WHERE PEOPLE, HURT AND DAMAGED BY LIFE AND BY RELIGION, CAN MEET
JESUS AND COMMIT TO FOLLOWING HIM. WE INVITE YOU TO JOIN US IN DIS-
COVERING HIS POWER TO HEAL ALL OF OUR PAIN AND DYSFUNCTION AND TO
MAKE US MORE THAN WE HAVE EVER DREAMED THAT WE COULD BE.

FOR YOUR INFORMATION

SERVICIO EN ESPANOL comienza a las 9:30am hasta las 11:00am Escuela Sabatica. Culto Divino alas 11:15am hasta las 12:30pm. (meets in the Hispanic Class Room) Para mas informacion **CHURCH ELDERS** will be at the front of the church immediatly following each Worship Service to pray with anyone who may wish to do so.

NEXT FELLOWSHIP LUNCH Our next Fellowship Lunch will be January 10, 2015.

CELEBRATE RESTORATION AND RENEWAL (CRR) ~A time and place to discover God’s power to restore and renew you - no matter the pain that you feel, the problems life has dealt you or the habits which chain you. Fridays from 7pm-8:30pm here at the church.

WORSHIP SERVICE RECORDINGS are available in the Resource Center following today’s service. CD’s are \$4.00ea. You may also find them online at our church webpage under “media library” as downloads or streaming.

LIVE-STREAMING of our worship service can be viewed by going to www.aubdsda.org and click on “church service live”. Previously recorded services are also available.

MINISTRY OPPORTUNITIES Sabbath School Secretary Assistants are needed for the 2nd, 3rd, & 5th Sabbaths of the month. This is a once a month service duty of about 25 minutes to help with Sabbath School attendance records. You would need to be at the church by 9:45am. See Kathy Brewster in the Resource Center.

JANUARY NEWSLETTER Pick up a copy of the January Newsletter in the Lobby.

GAME NIGHT Please join us for a family Game Night on January 17, 2015 at 6:00pm. Bring your favorite cheese for toasted cheese sandwiches and a favorite Board Game or puzzle. Beverages, bread, fruit, chips, and popcorn will be provided. Also, bring one or more cans of food for our Community Services Food Closet.

MEMBERSHIP TRANSFERS:

First Reading

Transfer In: Norm and Betty Henderson from Lakeport SDA, Lakeport, CA

AUBURN RENEWAL CENTER

CLINIC HOURS

Tuesday January 6, 2015 - 9:00am - 1:00pm
 Saturday, January 10, 2015 - 2:00pm - 6:00pm
 Tuesday, January 13, 2015 - 9:00am - 1:00pm

CALENDAR JANUARY 4, 2015 - JANUARY 17, 2015

SUNDAY	4		SUNDAY	11	
MONDAY	5		MONDAY	12	
TUESDAY	6	Community Services 9:00am - 1:00pm Auburn Renewal Center 9:30am - 1:30pm	TUESDAY	13	Community Services 9:00am - 1:00pm Auburn Renewal Center 9:30am - 1:30pm
WEDNESDAY	7		WEDNESDAY	14	
THURSDAY	8	Volleyball PHAA 6:00pm - 9:00pm	THURSDAY	15	Volleyball PHAA 6:00pm - 9:00pm
FRIDAY	9	7:00pm - Celebrate Recovery 4:59pm - Sabbath Begins	FRIDAY	16	7:00pm - Celebrate Recovery 5:06pm - Sabbath Begins
SABBATH	10	8:30am Community Breakfast 10:00am - Sabbath School 11:15 - Worship Service Dave Carreon 5:00pm- Sabbath Ends	SABBATH	17	8:30am Community Breakfast 10:00am - Sabbath School 11:15 - Worship Service Dan Appel 5:07pm- Sabbath Ends